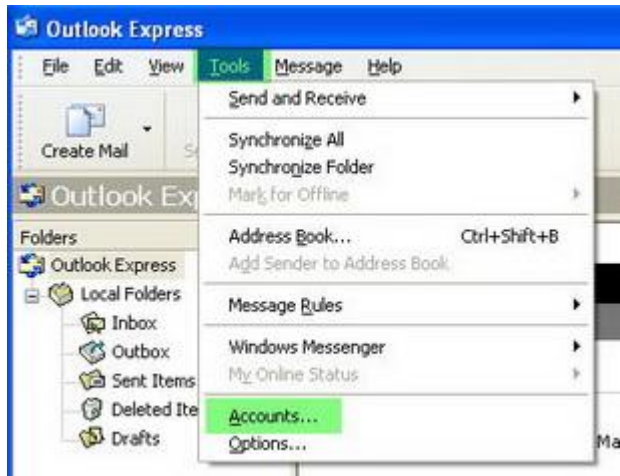




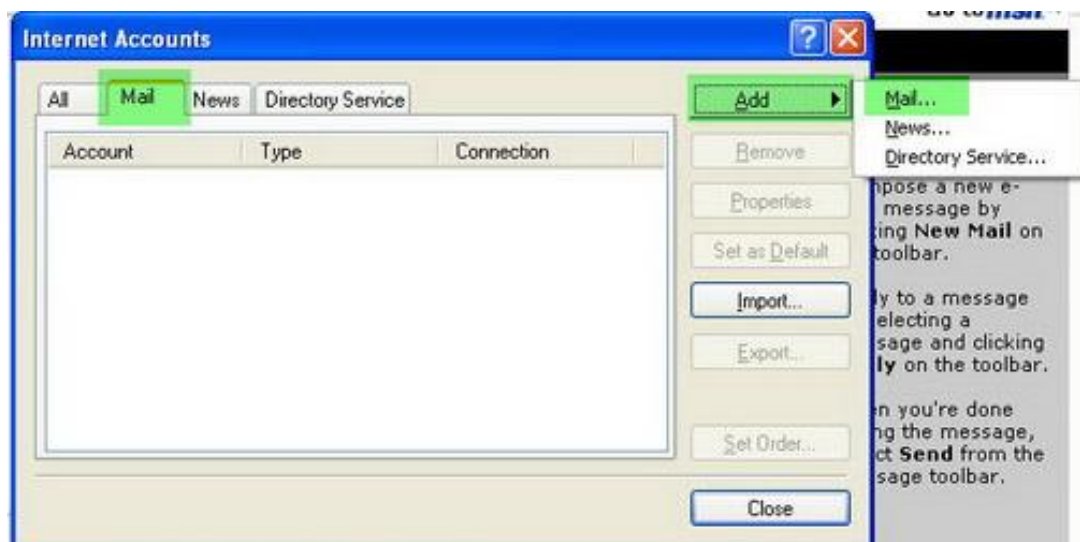
## Email Settings - Outlook Express 4 or Above

---

1. Open **Outlook Express**, select **Tools > Account**

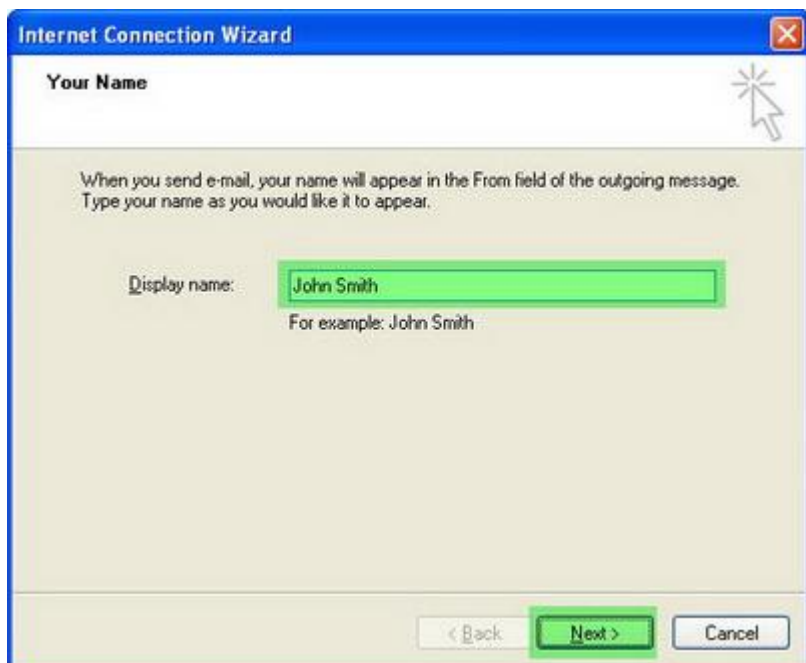


2. Select the **Mail** tab and click **Add > Mail**





3. Enter a display name in the **Display Name:** field (eg: John Smith) and click **Next**.



4. Enter your email address in the **E-mail address:** field (eg: yourname@yourdomain.com), and click **Next**.





5. Choose **POP3** server for **My incoming mail server** and in the **Incoming mail (Pop3, IMAP or HTTP) server** and the **Outgoing mail (SMTP) server** fields, enter your domain name with a "mail." prefix. (eg. mail.yourdomain.com), and click **Next**.

The screenshot shows the 'E-mail Server Names' step of the Internet Connection Wizard. The 'My incoming mail server is a' dropdown menu is set to 'POP3'. The 'Incoming mail (POP3, IMAP or HTTP) server:' text box contains 'mail.yourdomain.com'. The 'Outgoing mail (SMTP) server:' text box also contains 'mail.yourdomain.com'. The 'Next >' button is highlighted in green.

6. Enter your **email address** in the **Account name:** field (e.g: yourname@yourdomain.com) and your **password** in the **Password:** field, and click **Next**.

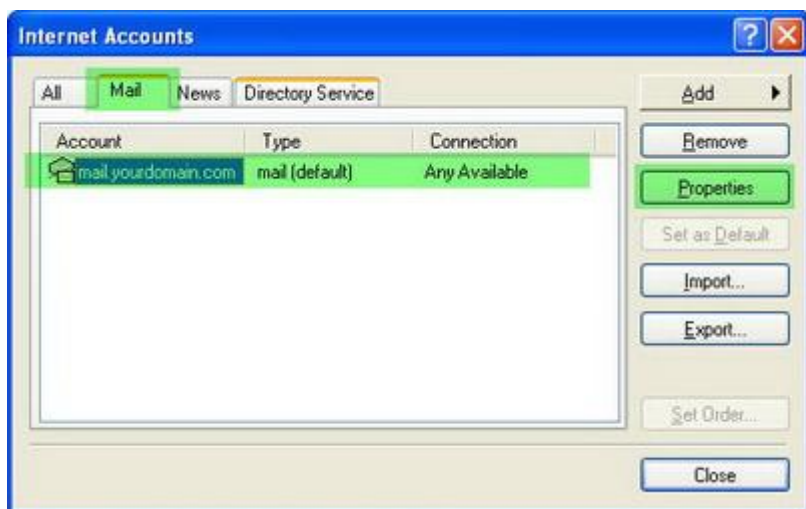
The screenshot shows the 'Internet Mail Logon' step of the Internet Connection Wizard. The 'Account name:' text box contains 'yourname@yourdomain.com'. The 'Password:' text box contains a masked password (represented by dots). The 'Remember password' checkbox is checked. The 'Log on using Secure Password Authentication (SPA)' checkbox is unchecked. The 'Next >' button is highlighted in green.



7. Click **Finish**.

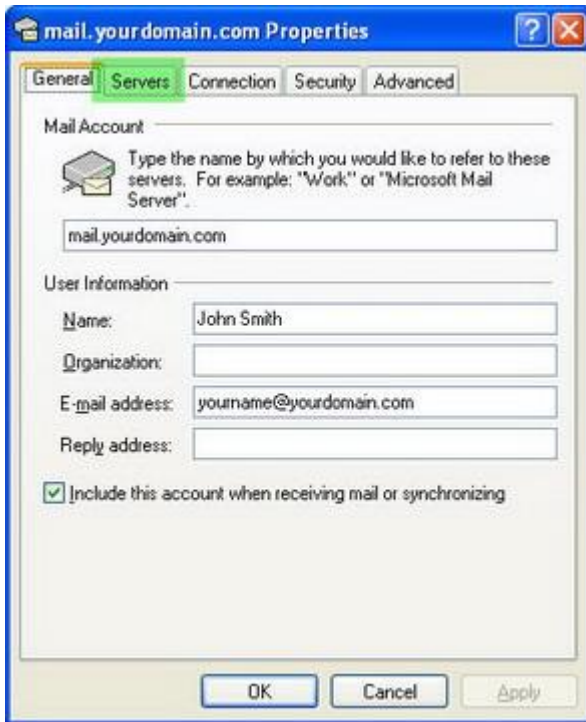


8. In the **Mail** tab within the **Internet Accounts** window, highlight the account you've just added (e.g. [mail.yourdomain.com](mailto:mail.yourdomain.com)), then click **Properties**.





9. Select the **Servers** tab.



10. Enable the **My server requires authentication** in the section of Outgoing Mail Server, then click **Settings...**





11. Enable **Log on using** and enter your email address (e.g. **yourname@yourdomain.com**), then enter your **Password** and click **OK**.



12. Click **OK**





13. Click **Close** to complete the settings.

